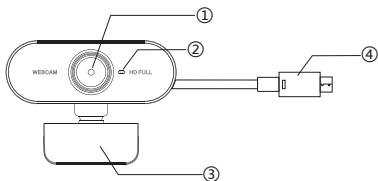


### 产品示图



- ① 高清摄像头
- ② 音频孔
- ③ 摄像头支架
- ④ U S B 2 . 0 端 口

### 安装步骤



- 1 打开摄像头支架，镜头对着显示屏前方。
- 2 压下摄像头支架，前方扣住屏幕后端支架贴紧显示屏背方。
- 3 将USB数据线插入电脑USB接口即可。

### 产品参数

网络摄像头参数			
驱动类型	免装驱动即插即用	USB线长	≥140cm
拍照格式	BMP	分辨率	1920x1080
传感器类型	CMOS	接口类型	USB2.0
闪烁控制	50Hz	麦克风	内置麦克风
调焦范围	80cm	产品尺寸	70x50.7x44mm
支持设备	支持主流电脑Windows 2000 , XP,XP2 ,Vista,Win7,Win8,Win10,Mac OS, Linux等操作系统		

### 产品配件

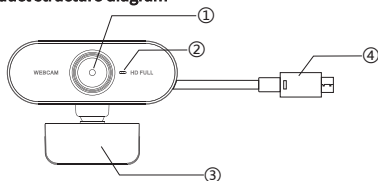


网络摄像头 \*1

产品说明书

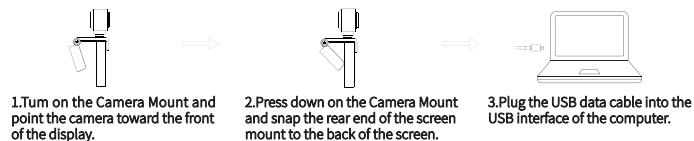
网络摄像头说明书\*1

### Product structure diagram



- ① HD camera
- ② MAC hole
- ③ Trestle
- ④ USB 2.0

### Installation steps



- 1.Turn on the Camera Mount and point the camera toward the front of the display.
- 2.Press down on the Camera Mount and snap the rear end of the screen mount to the back of the screen.
- 3.Plug the USB data cable into the USB interface of the computer.

### Detail parameter

Webcam parameters			
Driving type	Plug and play without driver	USB line length	≥140cm
Photo format	BMP	Resolving power	1920x1080
Sensor type	CMOS	Interface type	USB2.0
Scintillation control	50Hz	Microphone	Built-in microphone
focusing range	80cm	Product size	70x50.7x44mm
Support device	Support mainstream computer Windows 2000,XP,XP2 ,Vista, Win7,Win8,Win10, Mac OS,Linux operating system		

### Product accessories



Webcam\*1

Webcam instructions

Webcam instructions\*1

备注:英文版方向朝外

尺寸:98x55MM